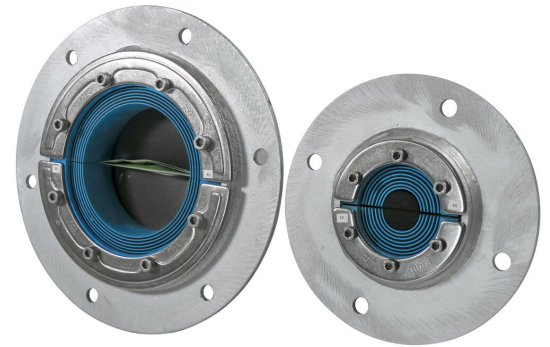




Roxtec RS EMC seal with SLF RS

EMC seal with sleeve for bolting, for a single cable or pipe.

The Roxtec RS EMC with SLF RS is a seal ensuring electromagnetic compatibility. The entry seal has a metal sleeve and is designed for single cables or pipes. The seal has two halves with removable layers making it adaptable to cables and pipes of different sizes. There is a choice between the ES version for electromagnetic shielding and the PE version that protects against conducted disturbances. The sleeve is bolted to the structure. Roxtec EC (electrical continuity) test sticks are available to help indicate the electrical performance of the transit installation.



- Rodent resistant
- Quick and easy to install

Product characteristics



Fire rated



Watertight



Gas-tight



EMI protection

Structure of installation



Metal

Mounting type



Bolting

Ratings & certificates

Fire

- A-CLASS according to IMO 2010 FTP Code
- E/EI rating according to EN 13501
- F/T rating according to UL 1479
- H-CLASS according to IMO 2010 FTP Code + HC fire load curve
- Jet fire according to ISO 22899-1 and OTI 95634

Tightness

- Gas: 2.67 bar (catastrophic)
- Water: 4 bar (catastrophic)

Supports

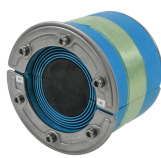
- Electromagnetic shielding
- Potential equalization

Sealing components

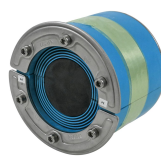
Sealing components



SLF RS sleeve



RS ES seal



RS PE seal



Lubricant

Accessories



Accessories ES and BG

For detailed information, please visit [roxtec.com](https://www.roxtec.com).



The product information provided by Roxtec does not release the purchaser of the Roxtec system, or part thereof, from the obligation to independently determine the suitability of the products for the intended process, installation and/or use.

Roxtec gives no guarantee for the Roxtec system or any part thereof and assumes no liability for any loss or damage whatsoever, whether direct, indirect, consequential, loss of profit or otherwise, occurred or caused by the Roxtec systems or installations containing components not manufactured by an authorized manufacturer and/or occurred or caused by the use of the Roxtec system in a manner or for an application other than for which the Roxtec system was designed or intended.

Roxtec expressly excludes any implied warranties of merchantability and fitness for a particular purpose and all other express or implied representations and warranties provided by statute or common law. User determines suitability of the Roxtec system for intended use and assumes all risk and liability in connection therewith. In no event shall Roxtec be liable for indirect, consequential, punitive, special, exemplary or incidental damages or losses.

The Roxtec products are offered and sold in accordance with the conditions of the Roxtec General Terms of Sales. The latest version of the Roxtec General Terms of Sales can be downloaded from <https://www.roxtec.com/en/about-us/about-roxtec/general-terms-of-sales/>

We reserve the right to make changes to the product and technical information without further notice. Any errors in print or entry are no claims for indemnity. The content of this publication is the property of Roxtec International AB and is protected by copyright.

This document was generated on: 2024-04-20